

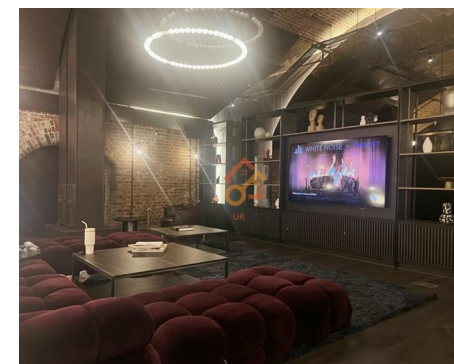
Let **UK** Home

2 Bedrooms

Flat

**Located
in Manchester**

£2,150 Per Month



info@letukhome.co.uk

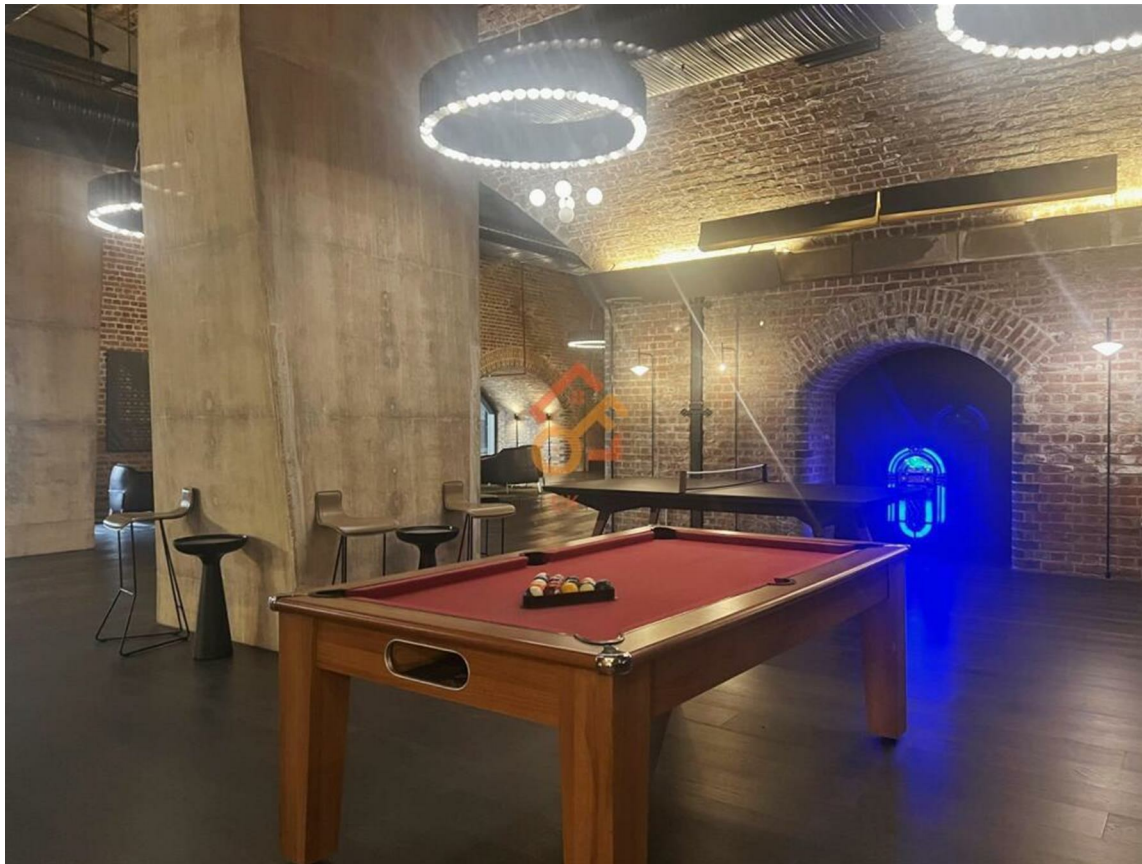
<https://www.letukhome.co.uk/>

01795 358 886



42 Great Bridgewater Street Manchester

M1 5LG



Let UK Home are excited to offer this stunning two bedroom apartment in Viadux development in Manchester.

This property comprises a large bright open plan kitchen and living room, two double bedrooms with fitted wardrobes and en-suites, and ample storage.

Residents will enjoy an exceptional lifestyle, with access to an extensive suite of private amenities including a swimming pool, spa, state-of-the-art gymnasium, wellness suite, private cinema, elegant residents' lounge, co-working spaces, and a dedicated full-time concierge, all designed to provide comfort, convenience, and elevated living.

Located in the heart of a bustling metropolis, Viadux Apartments on Great Bridgewater Street offers its residents a serene and elegant private space amidst the vibrancy of city living. The surrounding area is replete with amenities, including chic shopping centers, gourmet restaurants, and various entertainment options, as well as close proximity to business facilities, catering to both lifestyle and work requirements. The area is filled with high-end entertainment and commercial venues, within walking distance to various upscale dining options such as Tattu (Asian cuisine), La Bandera (Spanish brunch), Zouk (Indian brunch), FoodWell (healthy dining), and Albert's Schloss (German restaurant). Chinatown is also just a short distance away, making it very convenient.

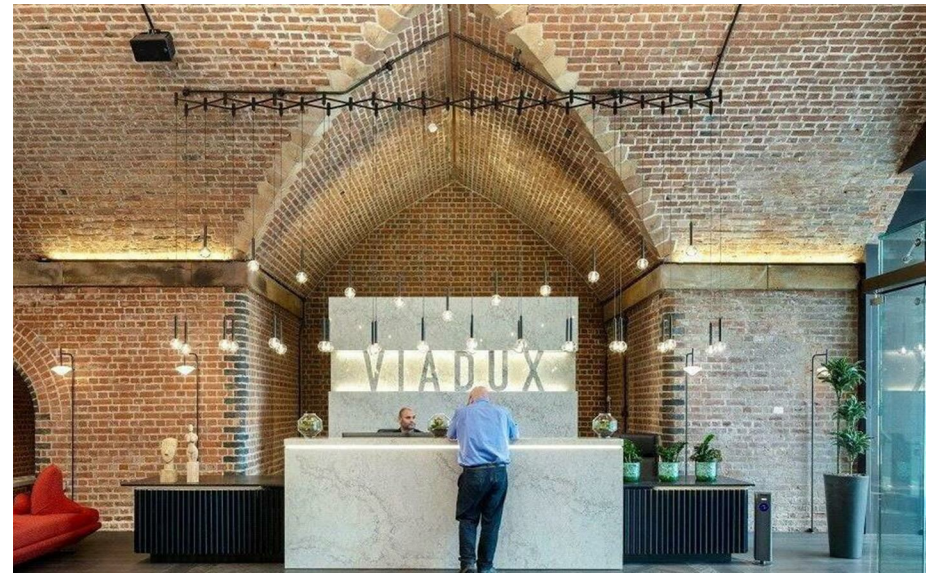
From the apartment, it is easy to reach prestigious universities such as the University of Manchester, University of Salford, Manchester Metropolitan

42 Great Bridgewater Street Manchester

£2,150 Per Month



- 7th Floor
- 24h Security
- Swimming Pool
- Residents Lounge
- Great Bridgewater Street
- Concierge Service
- Cinema & Game Room
- The Gym
- Co-working Space
- EPC Rating: C





Let **UK** Home

3F 2 Eastbourne Terrace
Paddington
London
W2 6LG

01795 358 886

info@letukhome.co.uk

Council Tax Band: D

Local Authority:

Agents Note: Whilst every care has been taken to prepare these particulars, they are for guidance purposes only. All measurements are approximate and are for general guidance purposes only and whilst every care has been taken to ensure their accuracy, they should not be relied upon and potential buyers/tenants are advised to recheck the measurements.

| Energy Efficiency Rating | | Current | Potential |
|---|----------------------------|---------|-----------|
| Very energy efficient - lower running costs | | | |
| (92 plus) A | | | |
| (81-91) B | | | |
| (69-80) C | | 79 | 79 |
| (55-68) D | | | |
| (39-54) E | | | |
| (21-38) F | | | |
| (1-20) G | | | |
| Not energy efficient - higher running costs | | | |
| England & Wales | EU Directive 2002/91/EC | | |

<https://www.letukhome.co.uk/>